

18500 1400mAh Lithium Ion Specification sheet

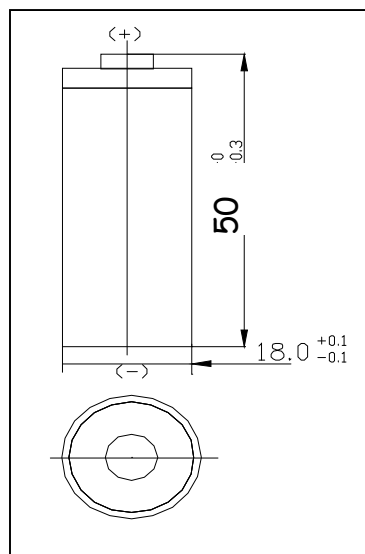
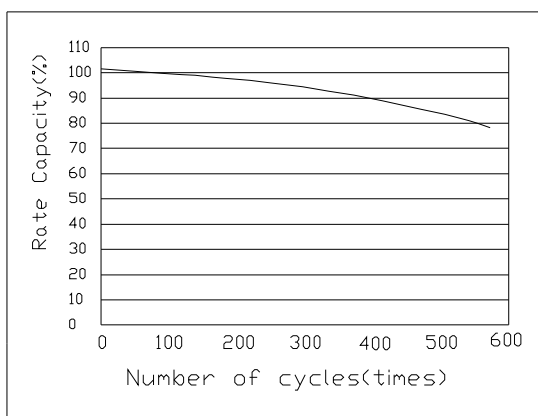
The purpose of this product specification is to provide technical information for the rechargeable Lithium-ion cylindrical 18500 cell with Internal circuit protection (IC), this information is provided by the manufacturer and made available by e-electronics.net.

2. Description and Model

2.1 Description	Rechargeable Lithium-ion cylindrical battery
2.2 Model	18500

3. Specification

3.1 Capacity	Typical	1400mAh
	Minimum	1350mAh
3.2 Charging Voltage		4.20V
3.3 Nominal Voltage		3.7V at 0.2C ₅ mA
3.4 Standard Charging Method		Constant current:0.5C ₅ mA Constant voltage 4.20V
3.5 Cut-off Discharge Voltage		3.00V
3.6 Max. Discharge Current		1.5C ₅ mA
3.7 Max. Charge Current		1C ₅ mA
3.8 Cycle Life		>500 cycles
3.9 Ambient Temperature		
Charge	0°C ~ -20°C~	45°C 60°C
Discharge		
3.10 Storage		
for within the temperature	-20°C ~	60°C
for within the humidity	•75%	



185000 1400mAh Lithium Ion Specification sheet

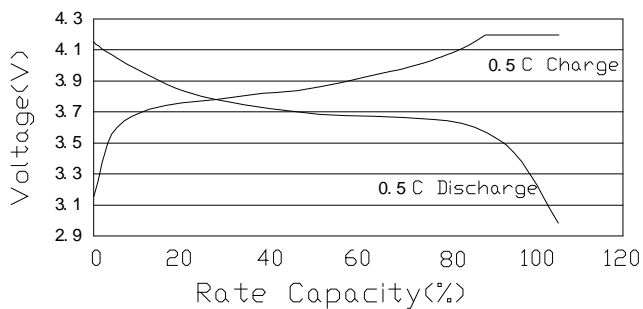
7.1 Charge/Discharge Characteristics

Charge:CC/CV 4.2V, 0.5C₅mA,

End - current 0.01C₅mA

Discharge:0.5C₅mA Cut-off at 3.00V

Temperature:25 C



7.3 Temperature Characteristics

Charge: CC/CV 4.2V 0.5C₅mA,

End -Current 0.01C₅mA

Discharge: As item 6.10

